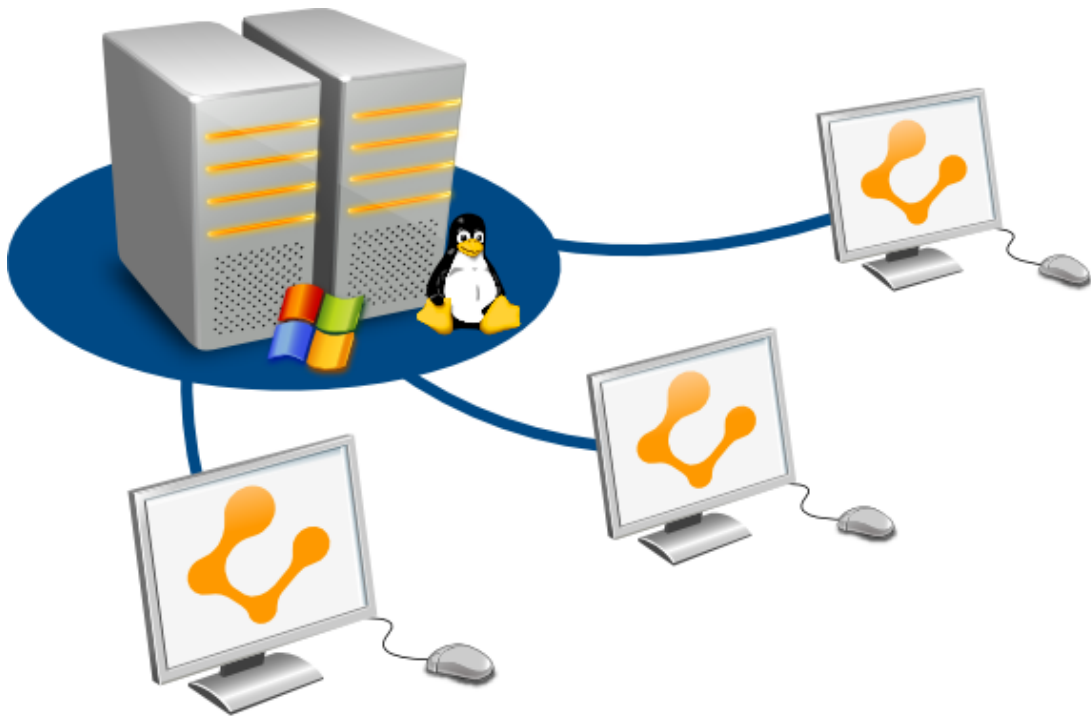


Ulteo Open Virtual Desktop v3.0

Microsoft Windows server installation



Contents

1 Prerequisites	3
1.1 System requirements	3
2 Installation of the Application Server	4
2.1 Session Manager side	5
3 Register the server and publish some applications	6
4 Launch a session	7
5 Internal System	8
5.1 Have a look at the Windows™ agent log	8

This documentation describes how to install an *Ulteo Open Virtual Desktop* **Application Server** (ApS) on a Microsoft Windows® server system.

This documentation **does not describe** the Open Virtual Desktop installation or configuration. For that, please read the **Installation documentation**.

1 Prerequisites

1.1 System requirements

- Evaluations/POCs: Minimum prerequisites are 1 CPU core and 1GB RAM
- Production environments: Ulteo recommends a minimum of 4GB RAM and 2 CPU cores

The supported operating systems are:

- Microsoft® Windows™ Server 2003 SP2 x86/x64
- Microsoft® Windows™ Server 2008R2 SP1

You also have Terminal services™ (2003) or Remote Desktop services™ (2008R2) installed and configured.



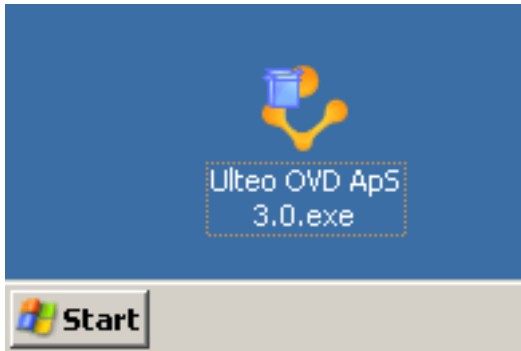
The Windows server may run in workgroup or be member of an AD domain **but must not** run as a domain controller.

An Ulteo OVD Session Manager installed and running.

The *Ulteo OVD Application Server* **setup**. It can be download from [this place at www.ulteo.com](http://www.ulteo.com).

2 Installation of the Application Server

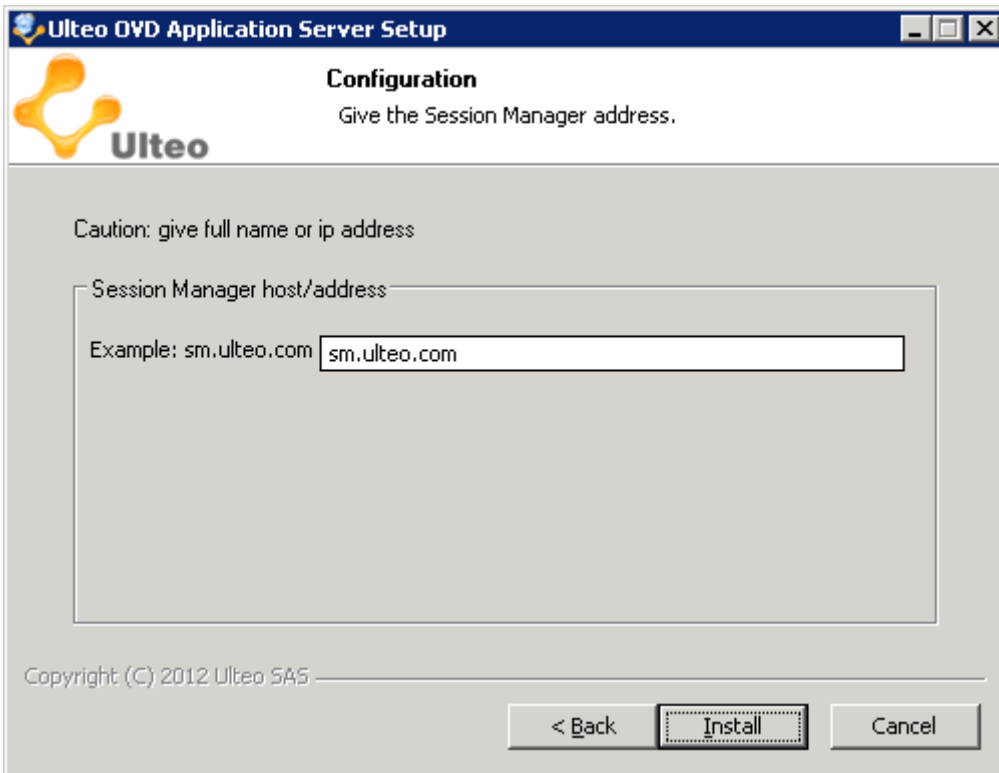
Copy the setup setup on the Windows™ machine.



Execute it.



The only question is about the host/IP address where the session manager can be accessed. (we use sm.ulteo.com here for the example, but of course, you have to set your own domain name).

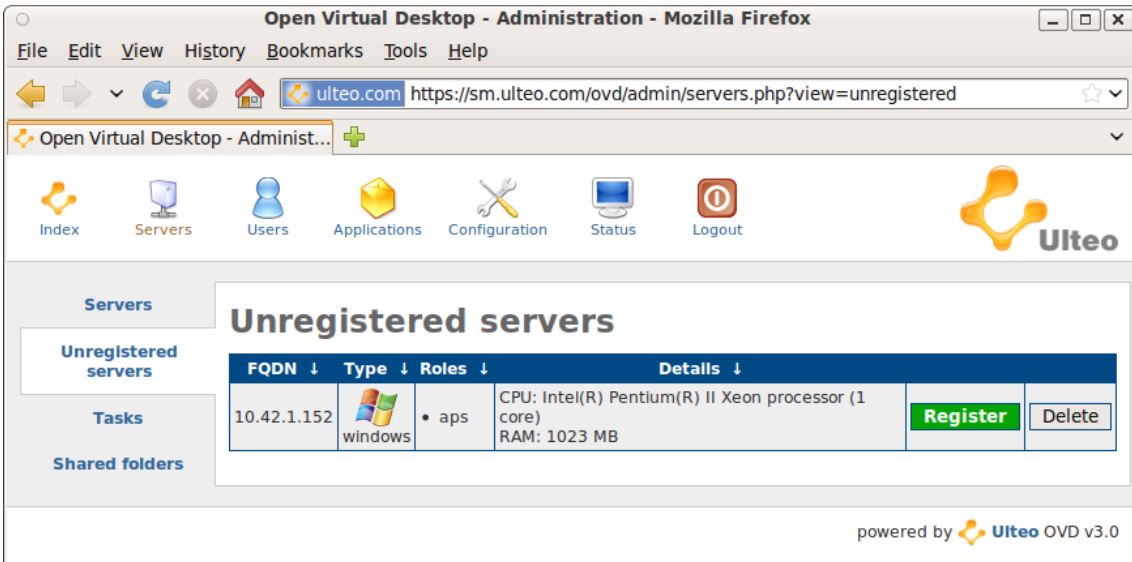


Finish the

installation. The Windows™ agent should be configured and running.

2.1 Session Manager side

Your Windows™ server should appear among the *Unregistered servers*.



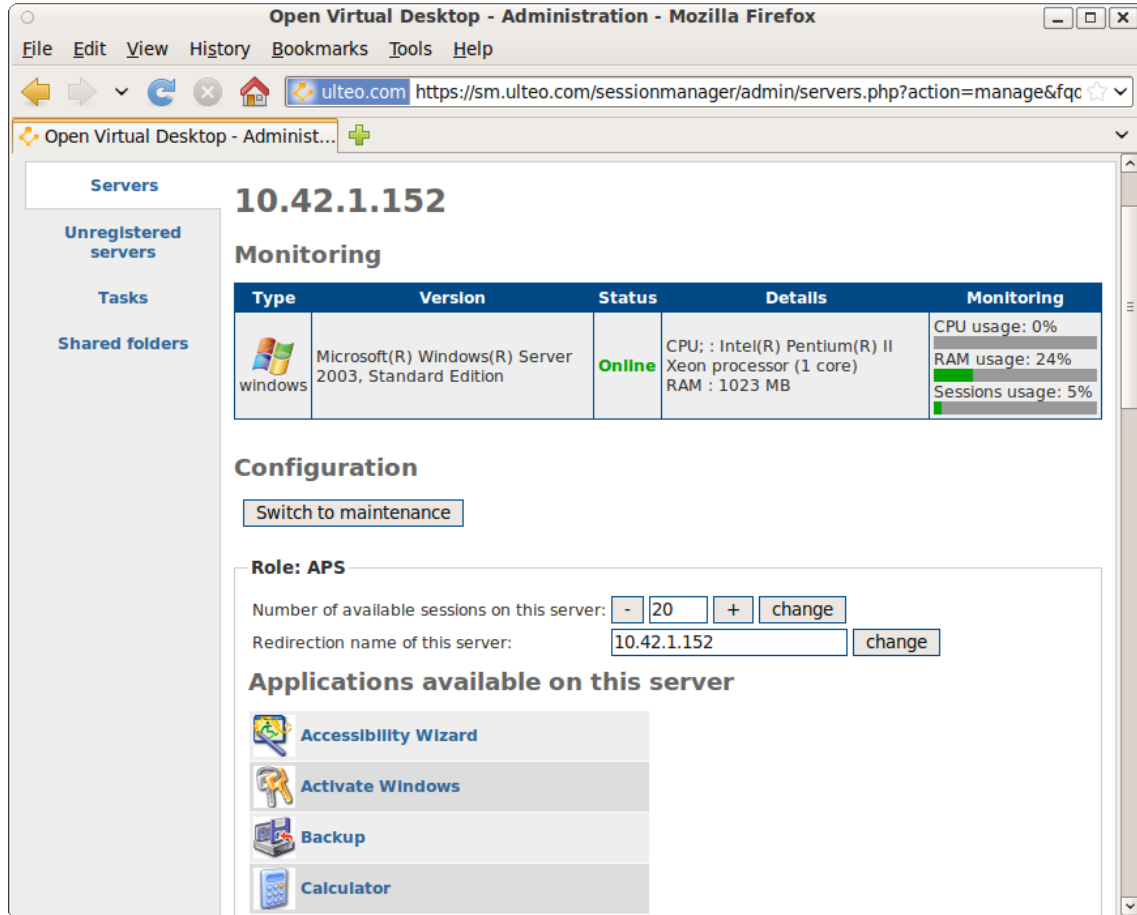
If

your server does not show up in the list, you might have a DNS configuration issue, or the Windows™ agent has a bug. Please refer to Section 5.

3 Register the server and publish some applications

First, register your Windows™ server and switch it from "maintenance" to "production" mode.

You should be able to list applications that are installed on your Windows™ server.

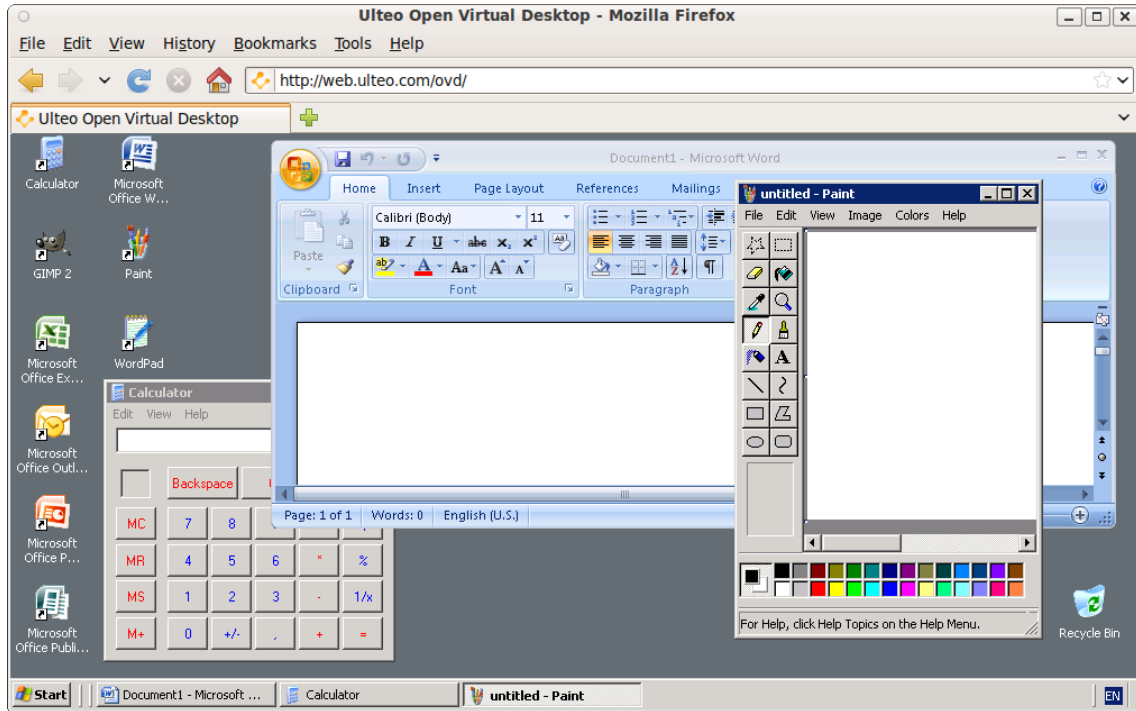


The

next step is to add some Windows™ applications to an existing Application Group so that users get authorized to run those your Windows™ applications. If you don't have an existing application group please refer to the Ulteo Open Virtual Desktop **Publication documentation** first.

4 Launch a session

If you launch a session, you should be able to access to your Windows™ applications from the application menu and from desktop icons if you enabled that option in the administration console.

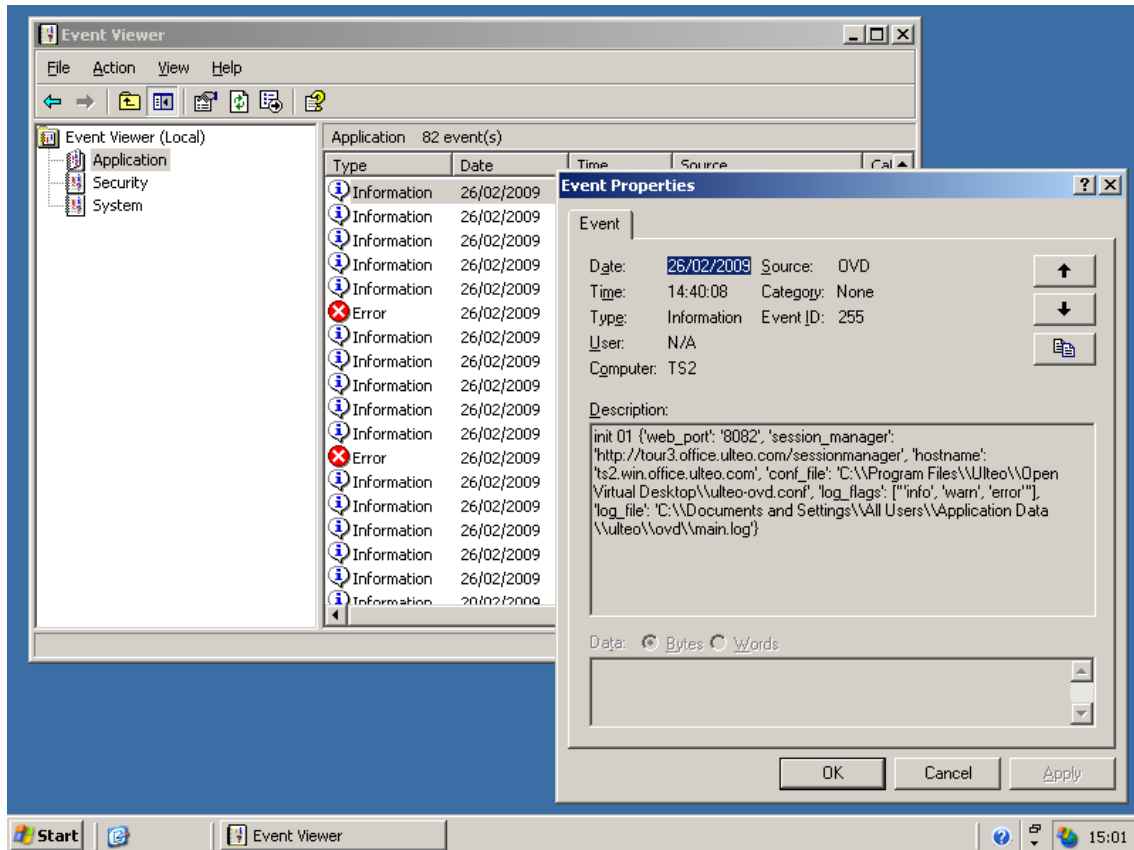


5 Internal System

5.1 Have a look at the Windows™ agent log

In a default Windows™ installation, the log file can be found at *C:\Documents and Settings\All Users\Application Data\Ulteo\ovd\main.log*.

It's also possible to read some debug messages in the **Windows™ Event Viewer** (on the Application section).



Ulteo Open Virtual Desktop v3.0
Microsoft Windows server installation

For further informations, check our website www.ulteo.com.



Ulteo

Copyright © 2012 Ulteo SAS