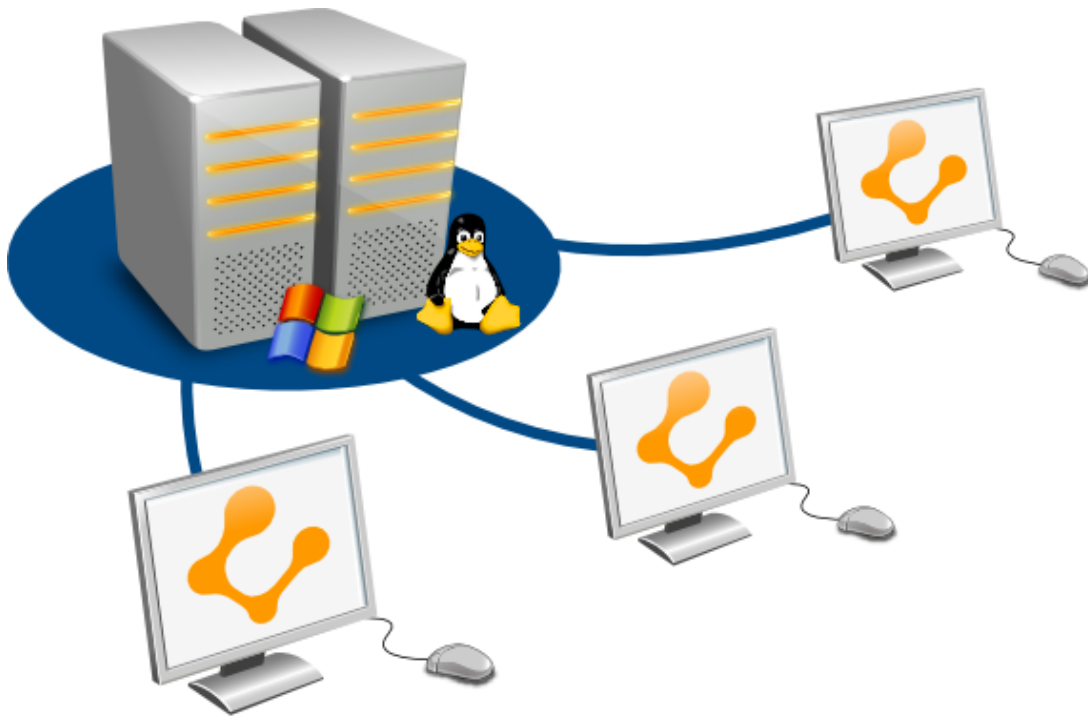


# Ulteo Open Virtual Desktop v3.0

## Native Client



## Contents

<b>1</b>	<b>Introduction</b>	<b>3</b>
<b>2</b>	<b>Prerequisites</b>	<b>4</b>
2.1	System requirements . . . . .	4
<b>3</b>	<b>Installation on Microsoft® Windows™</b>	<b>5</b>
<b>4</b>	<b>Installation on Ubuntu 10.04</b>	<b>7</b>
4.1	Online method . . . . .	7
4.2	Offline Method . . . . .	7
4.3	Finish with any method . . . . .	7
4.4	Package installation . . . . .	8
<b>5</b>	<b>User interface</b>	<b>9</b>
<b>6</b>	<b>Advanced settings</b>	<b>10</b>
6.1	Advanced settings description . . . . .	10
<b>7</b>	<b>Start a session</b>	<b>12</b>
7.1	Desktop session . . . . .	12
7.2	Application session . . . . .	13
<b>8</b>	<b>Advanced features</b>	<b>15</b>
8.1	Default configuration . . . . .	15
8.1.1	Microsoft Windows® registry . . . . .	16
8.2	Single Sign-On . . . . .	16



The Ulteo OVD Native Client is a **GOLD module**. GOLD modules are commercial Open-Source modules that are not available in the free download section. To access executable GOLD modules, you need a dedicated login and password.

In order to get access to GOLD modules, contact us at <http://www.ulteo.com/home/contact-us>.

## 1 Introduction

This documentation aims to describe the usage of Ulteo Open Virtual Desktop "Native Client" in its capabilities and how to launch Ulteo OVD sessions with it.

## 2 Prerequisites

The OVD Native client can be installed on Microsoft® Windows™ XP or newer.

It can also be installed on Ubuntu 10.04 (Lucid Lynx)

### 2.1 System requirements

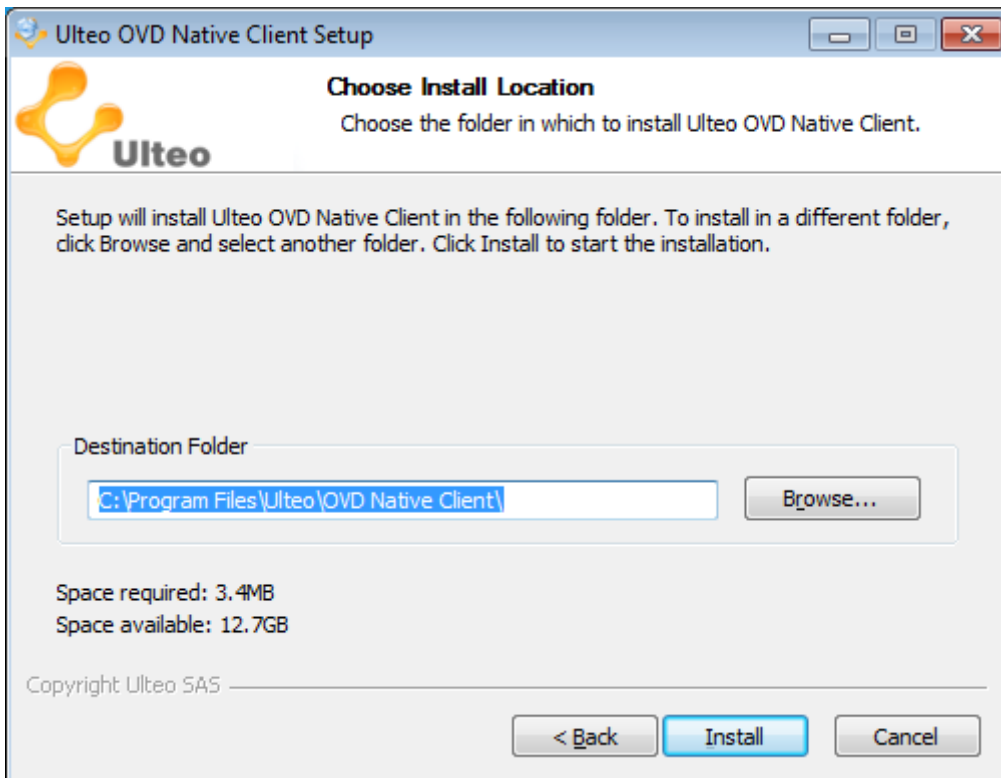
- Evaluations/POCs: Minimum prerequisites are 1 CPU core and 512MB RAM
- Production environments: Ulteo recommends 1GB RAM whenever possible or more

### 3 Installation on Microsoft® Windows™

Download and execute the Ulteo OVD Native Client installer, [from this place](#)



Select where you want to copy the client files



The client installation is finished. You can now launch a session.



## 4 Installation on Ubuntu 10.04

### 4.1 Online method

The following method describe the repository process when your servers can access to Internet. If not, please read the offline method.

- Edit the `/etc/apt/sources.list.d/ulteo-ovd.list` file and add these lines:



You have to replace LOGIN and PASSWORD by your own.

```
deb http://archive.ulteo.com/ovd/3.0/ubuntu lucid main
deb http://LOGIN:PASSWORD@archive.ulteo.com/ovd/3.0/gold/ubuntu ←
    lucid main
```

### 4.2 Offline Method

- The OVD offline repository is made of two archives. The first one can be found [here](#) or from the Ulteo OVD DVD. The second one is only available [online](#), using your Gold account credentials.

You have to download or copy the two archives to the `/root/` path of your workstation.

- Uncompress the archive:

```
# for f in ovd-3.0-*ubuntu-lucid.tar.gz; do tar xzf $f; done
```

- Edit the `/etc/apt/sources.list.d/ulteo-ovd.list` file and add these lines:

```
deb file:///root/ovd-3.0-ubuntu-lucid lucid main
deb file:///root/ovd-3.0-gold-ubuntu-lucid lucid main
```

### 4.3 Finish with any method

- Update the package database:

```
# apt-get update
```



GPG errors given by the previous command will be fixed in the next installation steps. They won't prevent the installation to succeed.

- Install the keyring package to validate the repository using gpg:

```
# apt-get install ulteo-keyring
# apt-get update
```



## 4.4 Package installation

- Install the package *ulteo-ovd-native-client*:

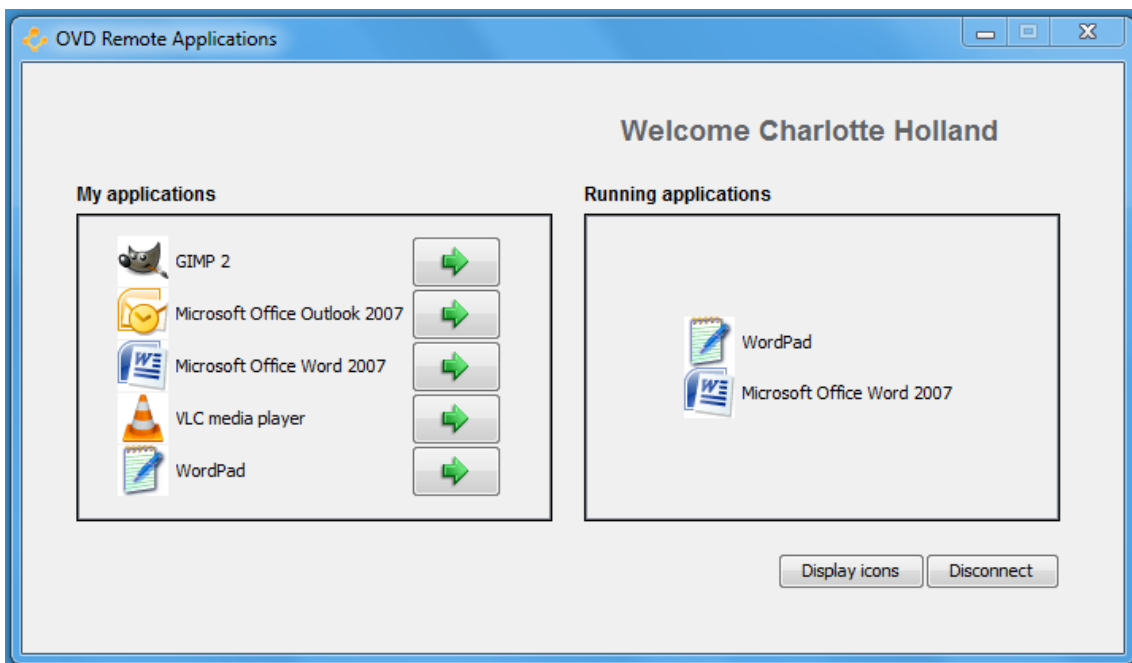
```
# apt-get install ulteo-ovd-native-client
```

## 5 User interface

When you start the Native Client, you have access to the login window that you will use to launch your session.



You just have to type your login and password, click the "Start!" button and voilà!



## 6 Advanced settings

At the login window, you can set advanced parameters by clicking the "More options ..." button.



As you can see, you now have more available options, each one is described below.

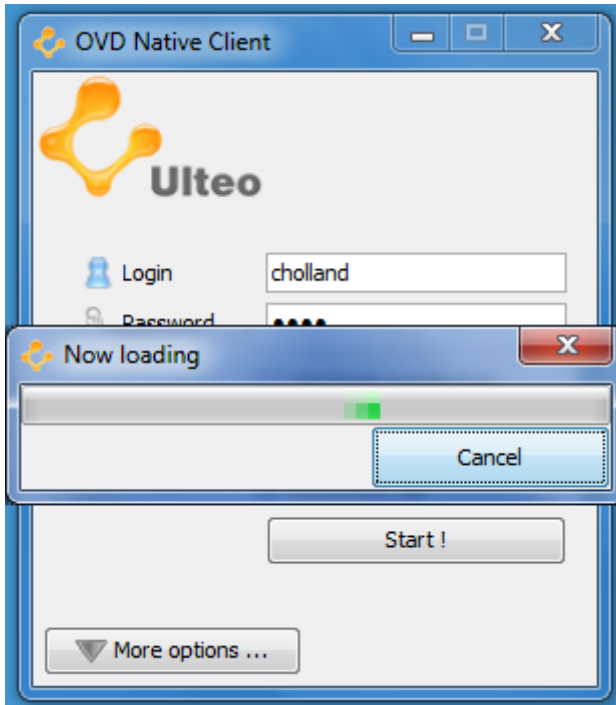
### 6.1 Advanced settings description

- *Use local credentials*: When enabled, the Web Client will request the Session Manager with your current machine's credentials, using for example Kerberos or NTLM. When disabled, the Web Client will request the Session Manager with the login and password entered in the login window.
- *Mode*: This option allows you to pick which session mode you want to use.
  - *Auto*: It is the Session Manager who will choose between a desktop session or an Application session.
  - *Application*: Launch a window with a list of application available. Applications are launched seamlessly.
  - *Desktop*: Launch a full desktop with applications integrated inside it.
- *Resolution*: Choose which resolution will be used, it applies only on desktop sessions.

- *Auto-publish shortcuts:* Choose if you want to have shortcuts on your actual desktop at the session start, it applies only on application sessions.
- *Language:* This option allows you to pick which language your OVD session will use.
- *Keyboard layout:* This option allows you to select which keyboard layout your local keyboard is using.

## 7 Start a session

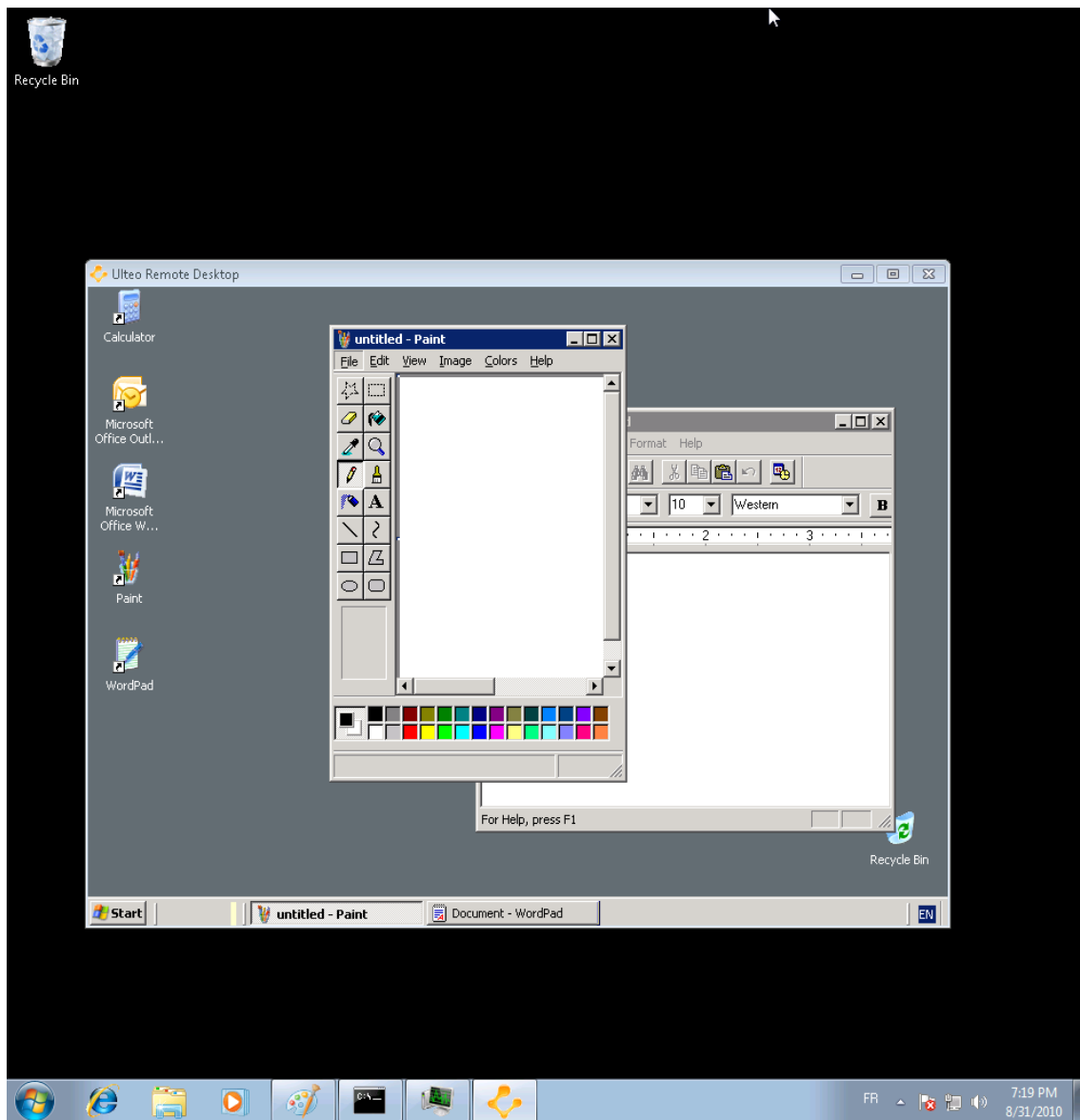
When you start a session, a loading splash appears.



Below you will find screenshots for both Desktop and Application mode.

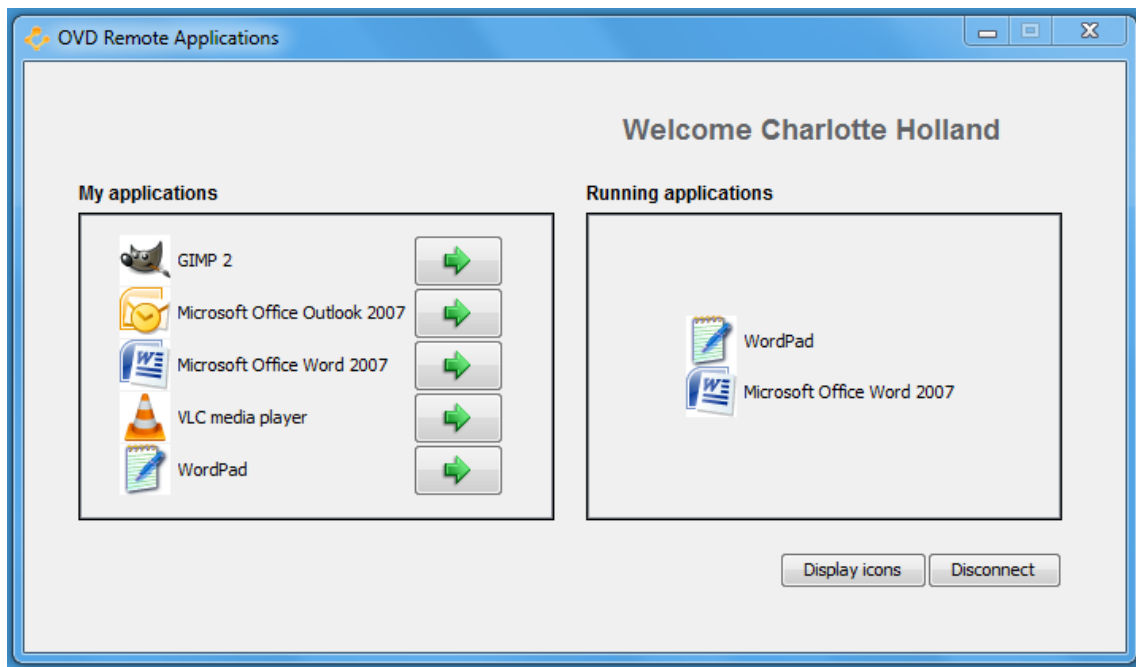
### 7.1 Desktop session

When the session is ready, your Desktop is available and you can launch applications, explore your files...



## 7.2 Application session

When the session is ready, your Application session is available and you can launch applications seamlessly.



You can launch applications by clicking on the arrow button. You can also choose to integrate the applications shortcuts to your desktop by clicking on *Display icons*.

## 8 Advanced features

### 8.1 Default configuration

When enable the *Remember me* checkbox, the current configuration is saved in a configuration file. This file is named *default.conf* and uses the INI syntax.

The directory used to store the configuration file depends on the system:

- On Microsoft Windows® systems, it's *Application Data\ulteo\ovd\client*
- On Linux systems, it's *~/.ulteo/ovd/client*

Here is the recognized INI tree:

- Section **server**
  - **host**, the server to connect to
  - **port**, the port to use if not default (443)
- Section **user**
  - **login**, the login you want to use
  - **use-local-credentials**, Can be *true* or *false* (default).  
When this option is used, the *login* attribute is useless.
- Section **session**
  - **language**, using the IETF lang code
  - **keymap**, using the IETF lang code
  - **mode**, the session mode, can be *applications*, *auto* or *desktop*
- Section **publication**
  - **auto-publish**, for applications mode only, add the application shortcuts on the Desktop and perform file associations. Can be *true* (default) or *false*.
- Section **screen**
  - **size**, for desktop mode only. Can be *800x600*, *1024x768* (default), *1280x678*, *maximized* or *fullscreen*
- Section **gui**
  - **locked-gui**, minimal interface with only login and password fields



### 8.1.1 Microsoft Windows® registry

On Microsoft Windows® systems, it's also possible to read the default configuration from the registry by use the option `--reg`

The Native Client read the HKEY\_LOCAL\_MACHINE first and then, the HKEY\_CURRENT\_USER tree. The readed path is `Software\Ulteo\OVD\NativeClient`.

- **login**, the login you want to use
- **host**, the server to connect to
- **port**, the port to use if not default (443)
- **language**, using the IETF lang code
- **keymap**, using the IETF lang code
- **mode**, the session mode, can be *applications*, *auto* or *desktop*
- **size**, for desktop mode only. Can be *800x600*, *1024x768* (default), *1280x678*, *maximized* or *fullscreen*
- **auto-publish**, for applications mode only, add the application shortcuts on the Desktop and perform file associations. Can be *true* (default) or *false*.
- **use-local-credentials**, Can be *true* or *false* (default).  
When this option is used, the *login* attribute is useless.
- **show-progressbar**, Can be *true* (default) or *false*.
- **locked-gui**, minimal interface with only login and password fields

### 8.2 Single Sign-On

On Microsoft Windows® system, it's possible to perform SSO connection using the local credentials.

To enable this feature, you have to check the "Use local credential" checkbox or define it in the configuration (file or registry).

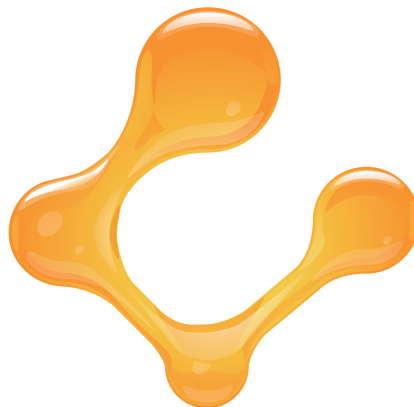


That feature requires a server side configuration.

You have to use a Apache authentication module (Kerberos or NTLM) and enable the "Apache auth module" into the Administration Console.

Ulteo Open Virtual Desktop v3.0  
Native Client

For further informations, check our website [www.ulteo.com](http://www.ulteo.com).



**Ulteo**

Copyright © 2012 Ulteo SAS - <http://www.ulteo.com>