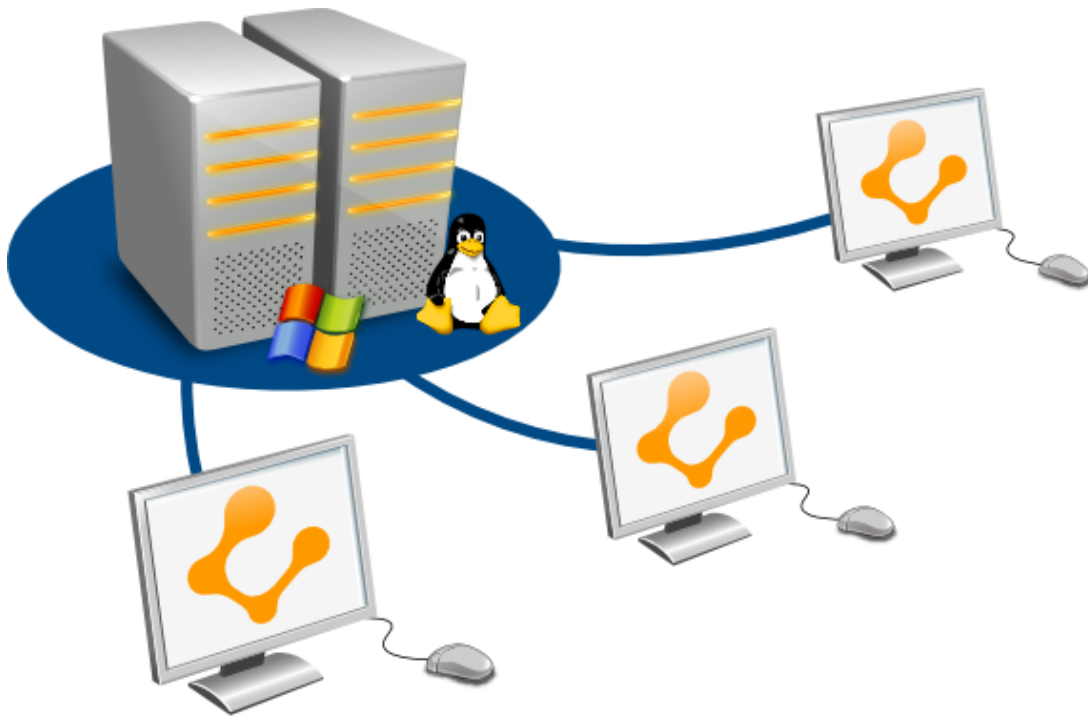


Ulteo Open Virtual Desktop v3.0

Web Client



Contents

1 Introduction	2
2 Prerequisites	3
2.1 System requirements	3
3 User interface	4
4 Advanced settings	6
4.1 Advanced settings description	6
5 Start a session	7
5.1 Desktop session	7
5.2 Portal session	8
6 Session end	9

1 Introduction

This documentation aims to describe the usage of Ulteo Open Virtual Desktop "Web Client" in its capabilities and how to launch Ulteo OVD sessions with it.

2 Prerequisites

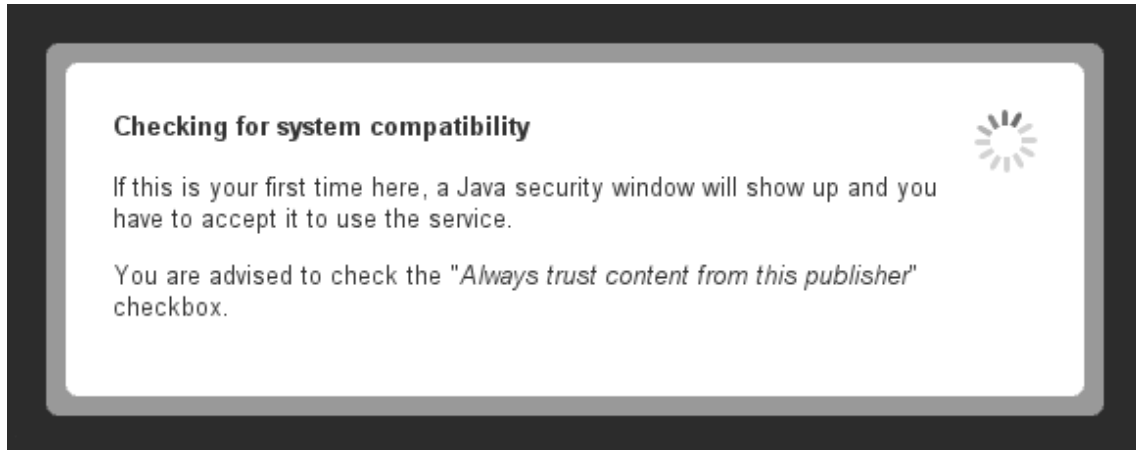
This is not a Web Client installation documentation. You need to have already installed a Web Client to be able to launch Ulteo OVD sessions with it.

2.1 System requirements

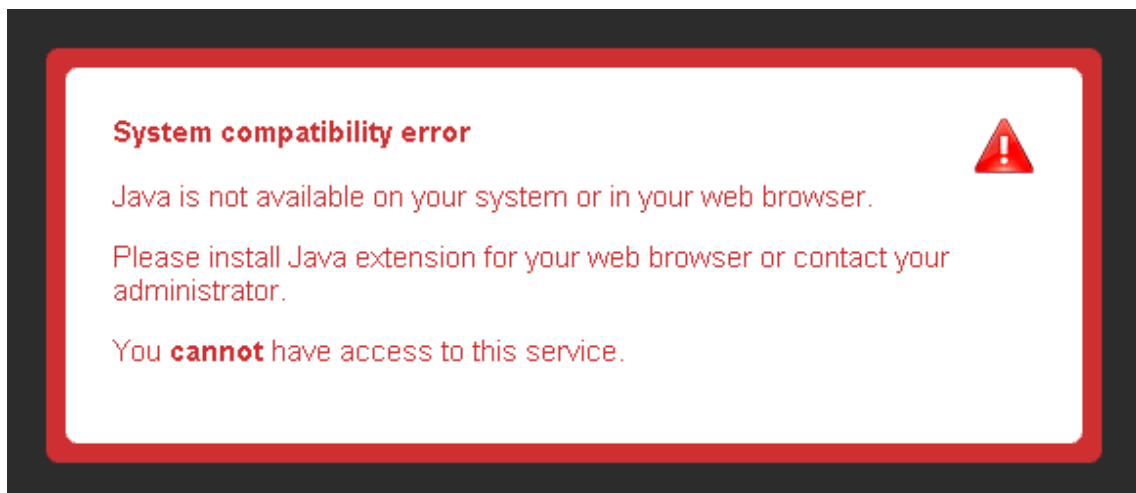
- Evaluations/POCs: Minimum prerequisites are 1 CPU core and 512MB RAM
- Production environments: Ulteo recommends 1GB RAM whenever possible or more

3 User interface

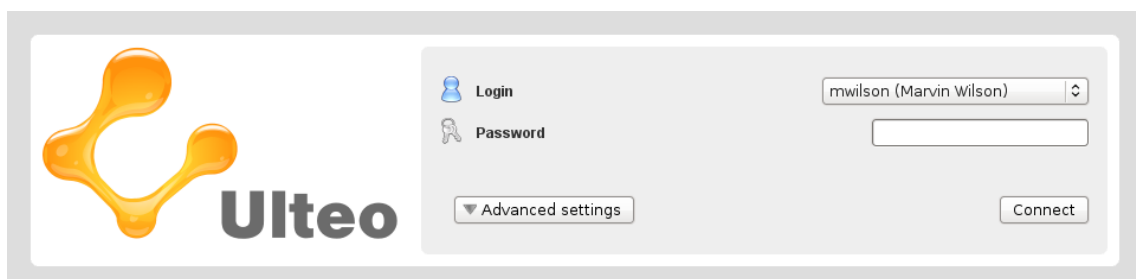
When you start using a Web Client, some tests are done to see if your browser can launch OVD sessions successfully, you will see this window.



If the test fails, you will see this window, it means that your web browser does not have a working Java support, or no Java support at all.

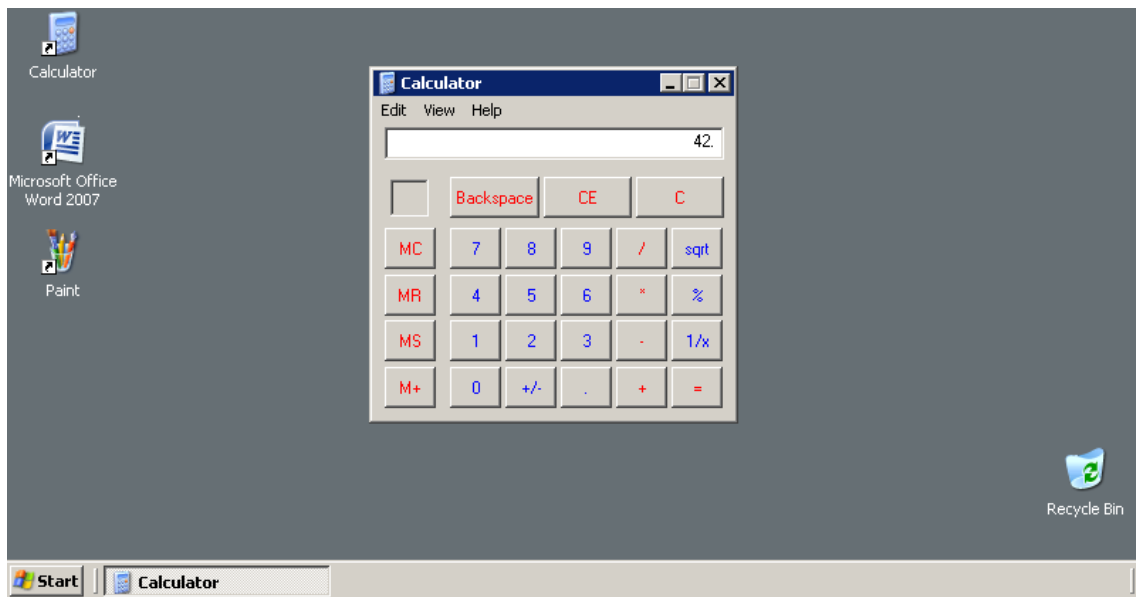


When the tests are done and successful, you have access to the login window that you will use to launch your session.



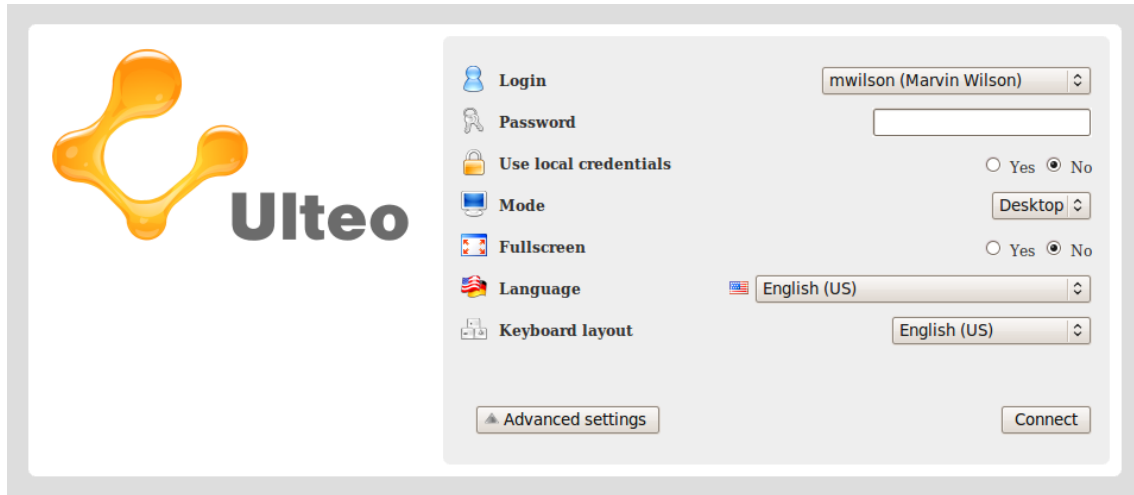
just have to pick your username in the list, type your password, click the "Connect" button and voilà!

You



4 Advanced settings

At the login window, you can set advanced parameters by clicking the "Advanced settings" button.



As you can see, you now have more available options, each one is described below.

4.1 Advanced settings description

- *Use local credentials:* When enabled, the Web Client will request the Session Manager with your current machine's credentials, using for example Kerberos or NTLM. When disabled, the Web Client will request the Session Manager with the login and password entered in the login window.
- *Mode:* This option allows you to pick which session mode you want to use.
 - *Desktop:* Launch a full desktop with applications integrated inside it.
 - *Portal:* Launch a web portal with applications listed in it. Applications are launched seamlessly.
- *Language:* This option allows you to pick which language your OVD session will use. Changing the language will auto-pick the associated keyboard layout (see below).
- *Keyboard layout:* This option allows you to select which keyboard layout your local keyboard is using.
- *Use pop-up:* Whether to launch your OVD session in a new browser window, or in the current one.

5 Start a session

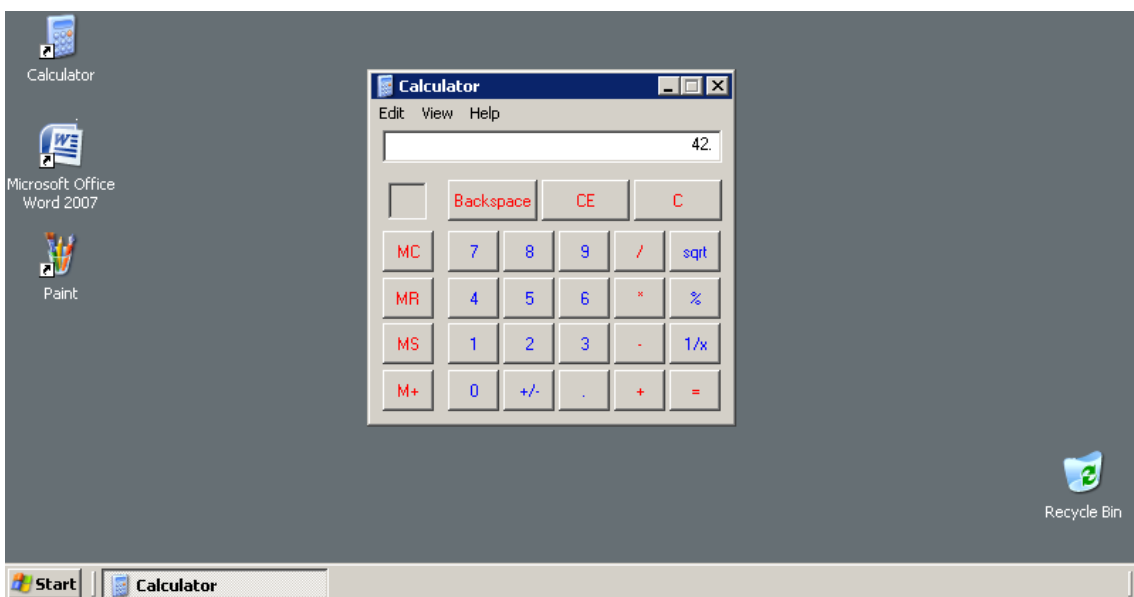
When you start a session, a loading splash appears.



Below you will find screenshots for both Desktop and Portal mode.

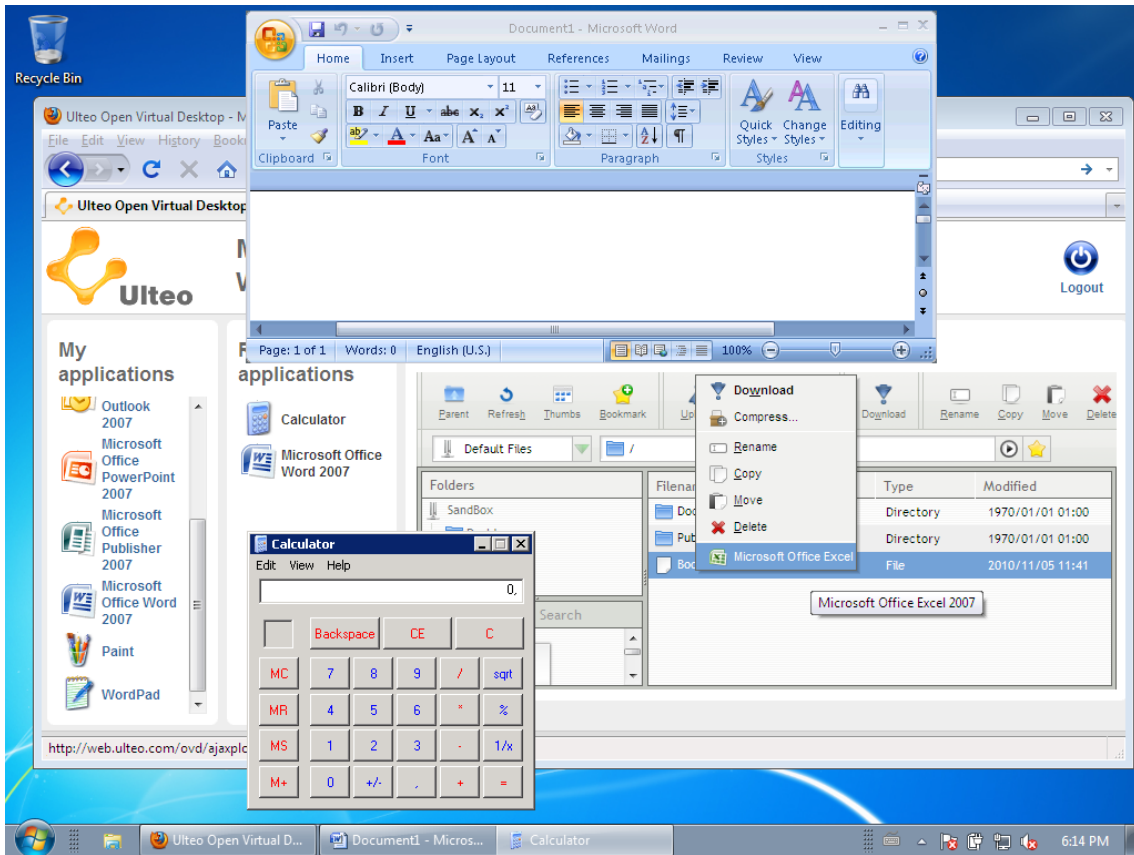
5.1 Desktop session

When the session is ready, your Desktop is available and you can launch applications, explore your files...



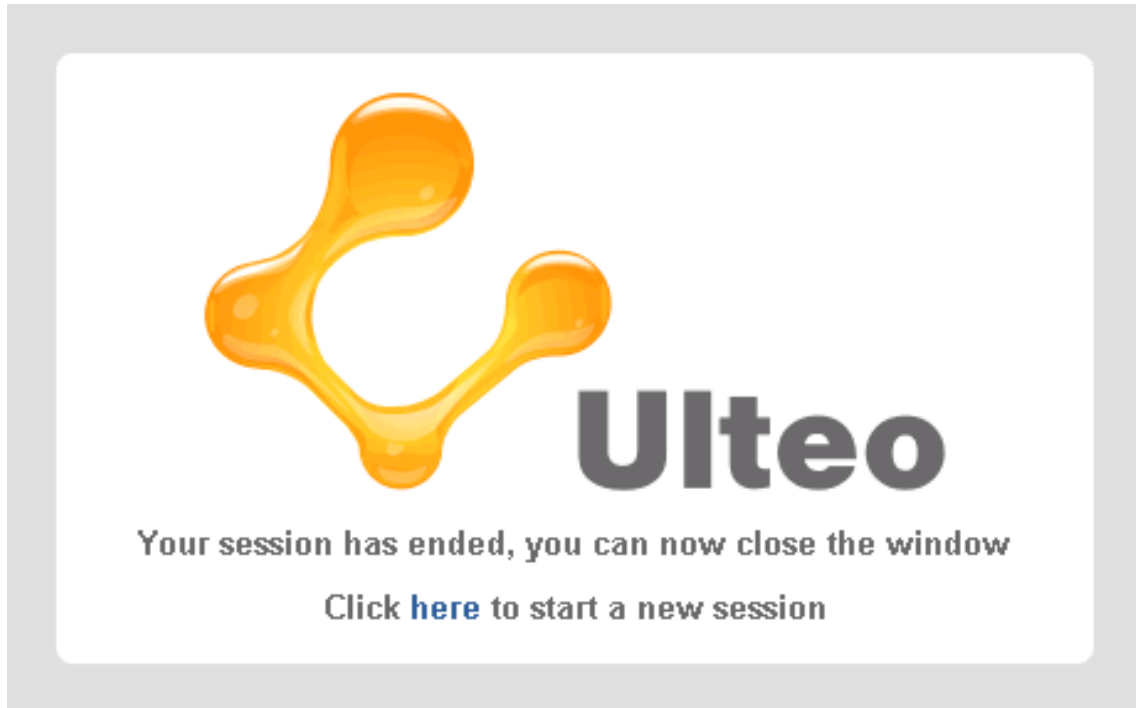
5.2 Portal session

When the session is ready, your Portal is available and you can launch applications seamlessly.



6 Session end

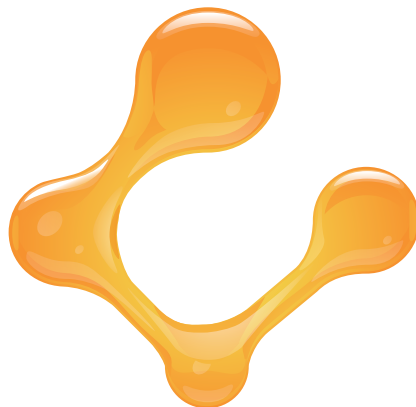
When you leave your Ulteo OVD session, you will see this window.



Clicking to start another session gets you back to the login window.

Ulteo Open Virtual Desktop v3.0
Web Client

For further informations, check our website www.ulteo.com.



Ulteo

Copyright © 2012 Ulteo SAS - <http://www.ulteo.com>